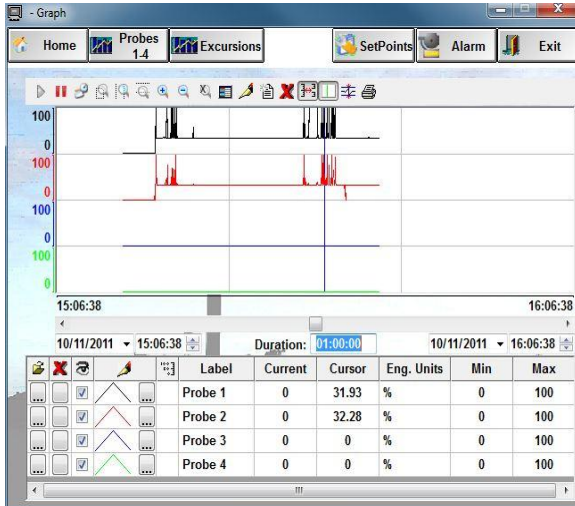


Broken Bag Detector and Monitoring System

Overview

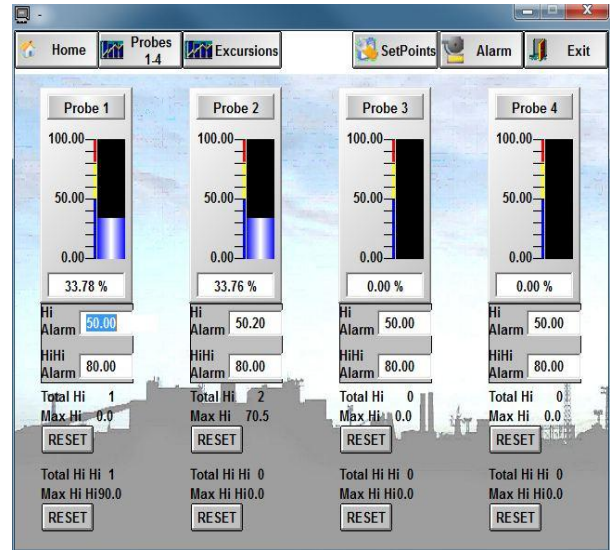
The DataTest broken bag detector and monitoring system provides both a graphical and tabular indication of the particulate level present at all triboelectric probe or Opacity meter locations.

Real time information is received by an operator to view the status of all baghouses and determine if a filter bag has a small leak or has completely failed, permitting appropriate corrective action to be taken. Notification via alarm, text, email etc. allows for offsite monitoring.



Particulate levels after cleaning of a bag-house chamber. Line weight and color are field selectable.

In addition to the status of the particulate level(s), the screens are custom configured to the customer's requirements to include additional data such as process temperatures, flow rates, and steam flow. Particulate collection equipment data, such as hopper level status, hopper temperatures, gas temperature, etc. can also be displayed.



Bar graph showing particulate value at probe, as well as Hi and Hi Hi alarm set points. Also shows number of excursions and max value during excursion.

Features

- Rockwell PLC Based System (other systems available)
- Representation of Data in both Graphical and Tabular Form
- 17" Touch Screen Display (larger screens available)
- Modbus RTU or Modnet TCP/IP Outputs (other outputs available)
- Easy Integration to Ethernet and PI Systems
- Custom Display Layouts to Match Existing Plant Systems
- Custom Control Cabinet Configurations

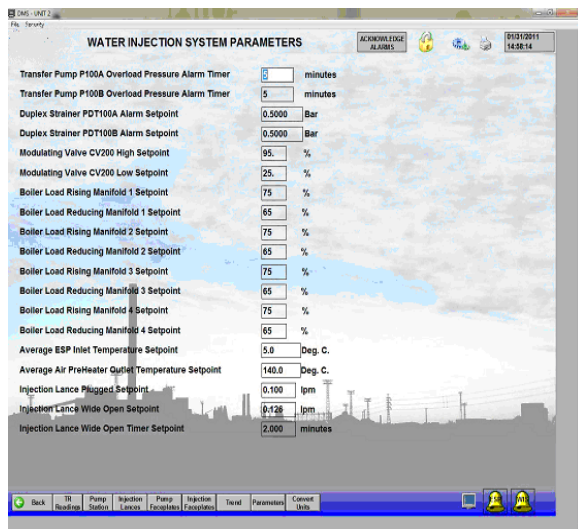


Broken Bag Detector and Monitoring System

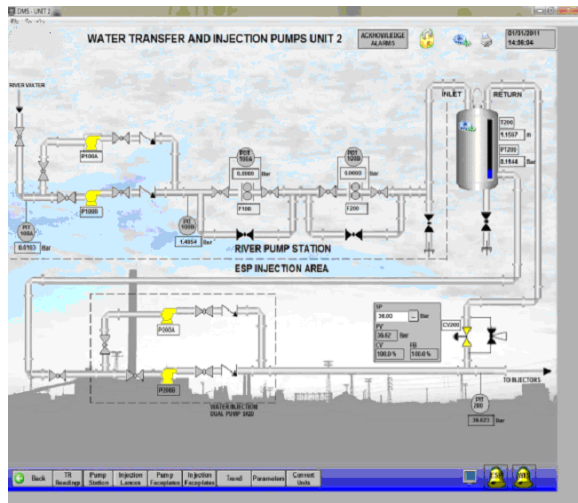
Auxiliary Monitoring Capability

Because the system is customized to your specific site requirements, any digital, analog, or thermocouple input from auxiliary equipment can be integrated into the monitoring and display system.

Some examples of custom data and graphic screens are shown below.



Data display for an auxiliary water injection system.



Graphic of flow control devices and tank level.

Many industries need to incorporate both gas stream particulate levels and auxiliary equipment data. The DataTest Broken Bag Detector and Monitoring system has a rich capability, user friendly interface and best communication system available to meet customer's individual needs.

Ask for an online demonstration !

Our development team is ready to work with your engineers and operators to design a monitoring system that meets your exact needs. Only what you require.



Photo of small PLC system cabinet.

The individual attention and local support we can bring to meet your monitoring requirements, is what is special, and is what you need to monitor your process effectively. Please contact us, or your local representative, to discuss your monitoring requirements.